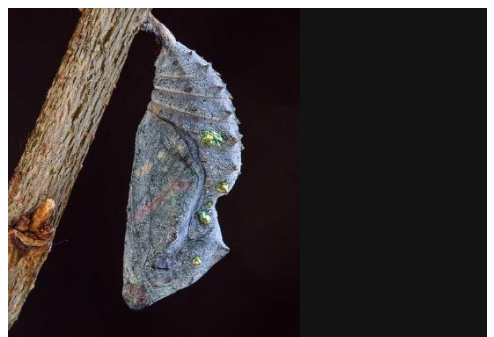


### Virtual Monarch and Meadow Month Lesson: Metamorphosis

*In this lesson, participants will explore how different caterpillars transform into butterflies through the process of metamorphosis.*

Metamorphosis is the transformation an organism goes through that results in a sudden change in appearance and/or ability. Caterpillars, for example, start off as long worm-like creatures that can only crawl with their 6 tiny legs, but after metamorphosis (this happens in the chrysalis) they emerge as beautiful butterflies and have the ability to fly!

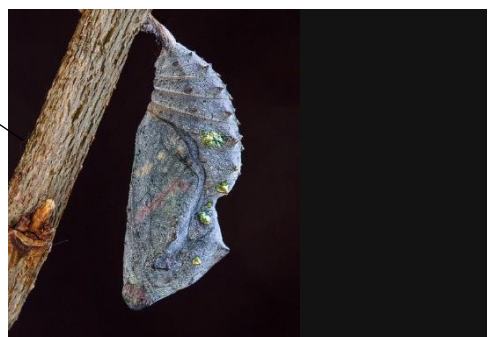
Look at the next 2 pages and see if you can match the caterpillar to the chrysalis and the chrysalis to the butterfly.







Answer Key  
Caterpillar to Chrysalis



Answer Key  
Chrysalis to Butterfly





Here is what each of the species looks like from caterpillar to butterfly!



Cabbage white butterfly  
*Pieris rapae*



Black swallowtail butterfly  
*Papilio polyxenes*



Red admiral butterfly  
*Vanessa atalanta*



Monarch butterfly  
*Danaus plexippus*

## Discussion Questions

- Was it easy to tell which caterpillar belongs to which chrysalis? What is easier or more difficult to tell which chrysalis belongs to which butterfly?
- Do the caterpillars look like the butterflies that they turn into?
- Describe how you think the red admiral caterpillar would feel in your hands. Describe how you think the monarch chrysalis would feel in your hands. Describe how you think the wings of each butterfly would feel in your hands. What about their antennae?
- Which caterpillar, chrysalis, and butterfly do you like the best?
- Have you seen any of these life cycle stages out in the wild? Where did you see them?
- Just for fun... if you could choose to go through a metamorphic process with no restriction, what physical changes would you like to have?